

OPERATOR'S MANUAL

SET DEFAULT PRICES FOR NOT LOGGED IN USER

Document version: 1.00
Confidential – intended for recipients only

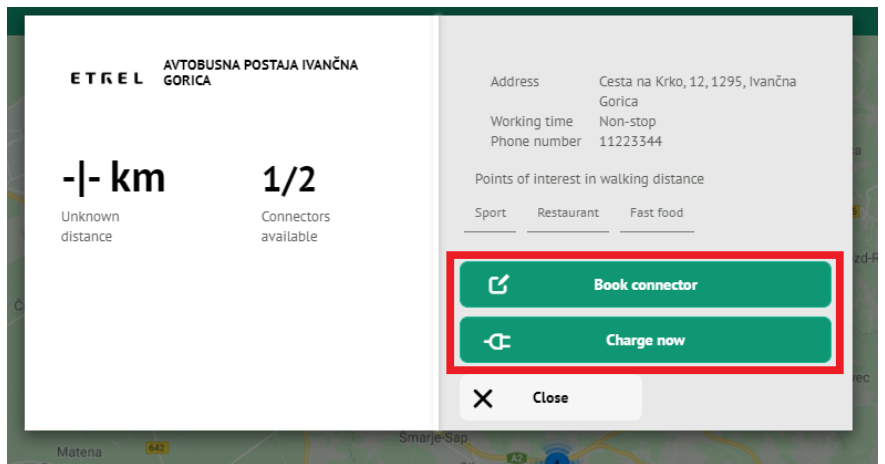
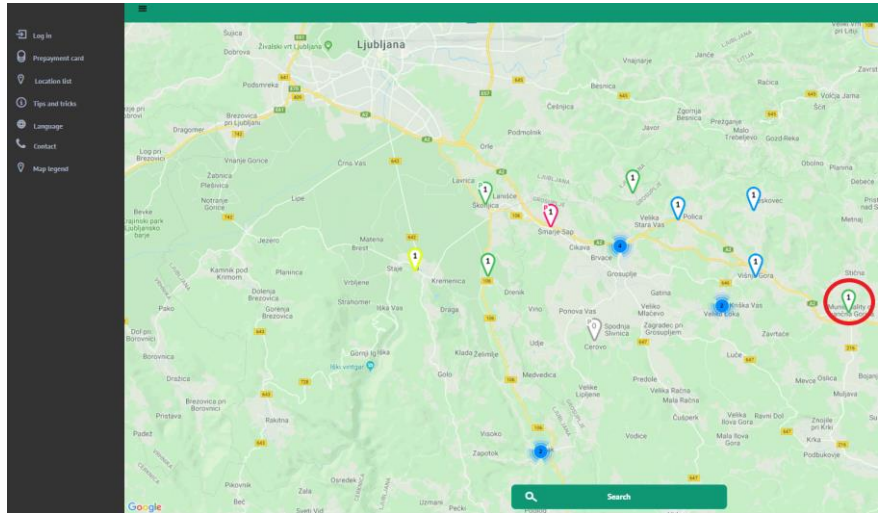


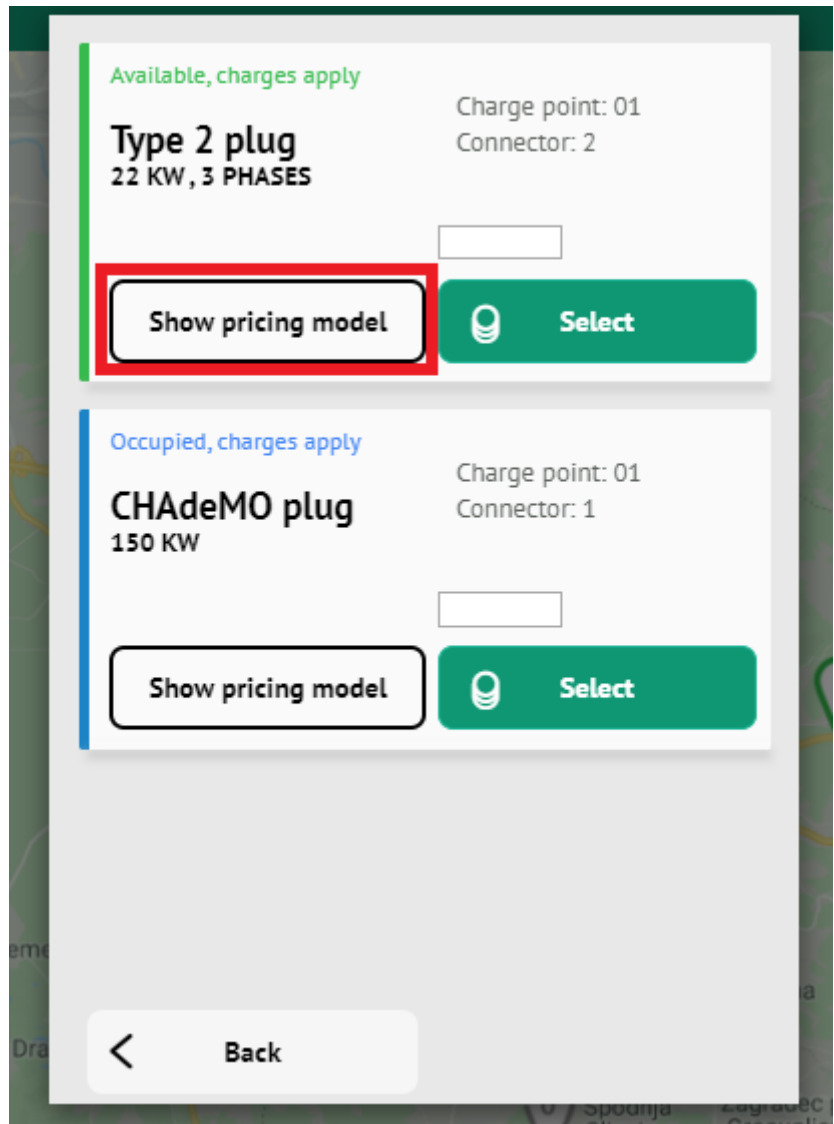
1

DEFAULT PRICES DISPLAYED ON DRIVER PORTAL

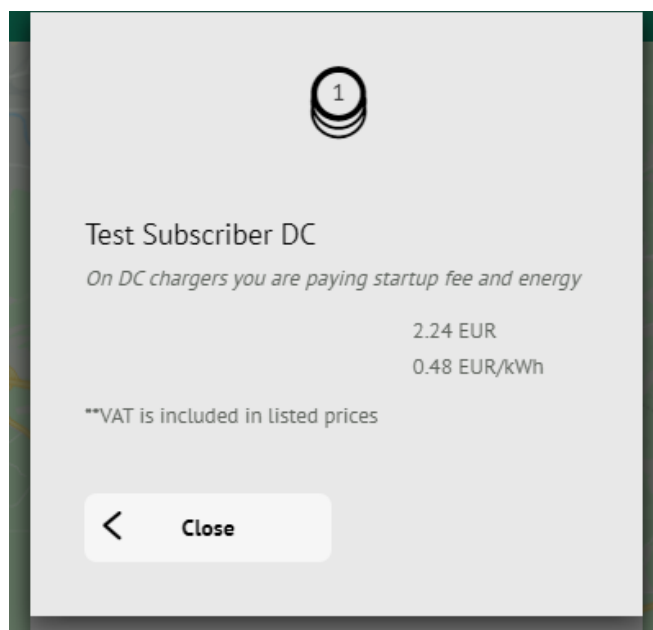
Operator can display default charging prices on driver apps (web and native app). Default prices are displayed to all not logged users using the apps.

User can see the prices when he clicks on the pin and after that either presses on the "Charge now" button or on "Book connector", if booking is supported on charge point.





New window will be displayed where user can click on left button "Show pricing model" and default prices will be displayed as shown on the example below.



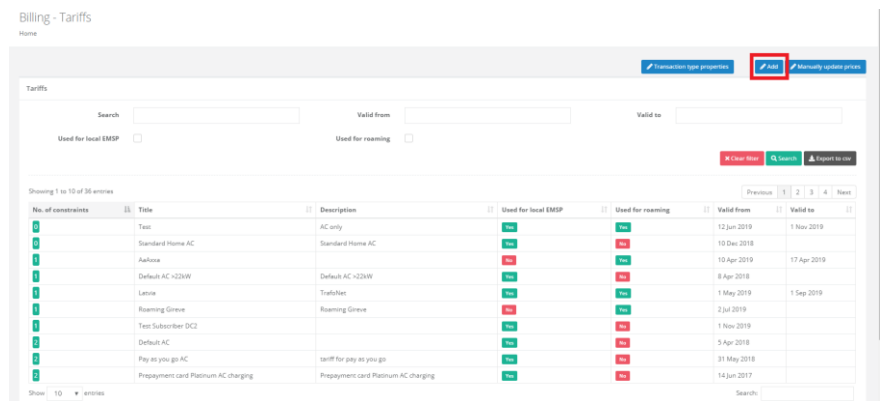
SECOND FUNCTIONALITY OF DEFAULT PRICES IS ALSO SENDING THE PRICES TO ROAMING PLATFORMS AND EXTERNAL PLATFORMS THAT COLLECT VARIOUS CHARGING DATA TO BE SHOWN ON THEIR APPS, WEBSITES ETC.

2 | SETTING DEFAULT PRICES

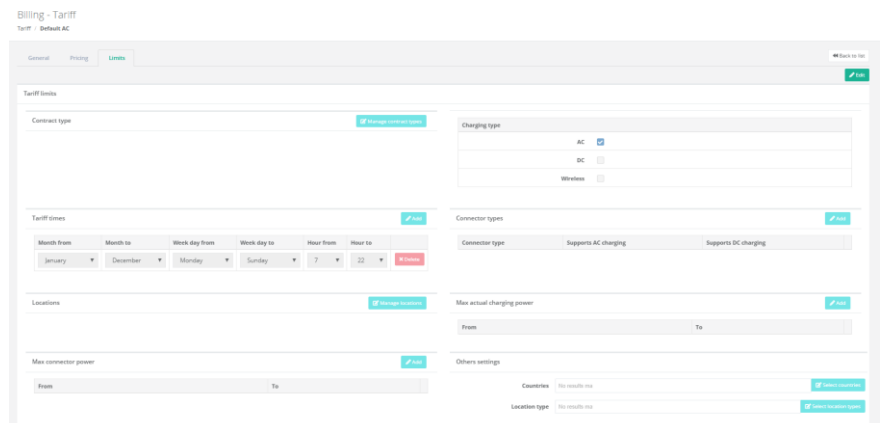
For operator to set these prices he needs to decide what kind of prices will be shown on the driver portal. First operator will need to create a new contract type or use an existing contract type for which prices will be shown as default to all the users that are not logged in you app.

To create new contract type go to "CRM", "Contract types" and click on "Add" to add new. Add new contract by defining the general information, payment type, validity dates... More about creation of new contract types is described in the CRM documentation. After the contract type is created operator will need to define tariffs that will be shown on the driver portal. To create a tariff go to "Billing and payment" module to "Tariff" submodule.

Create new tariff by clicking on the "Add" button.



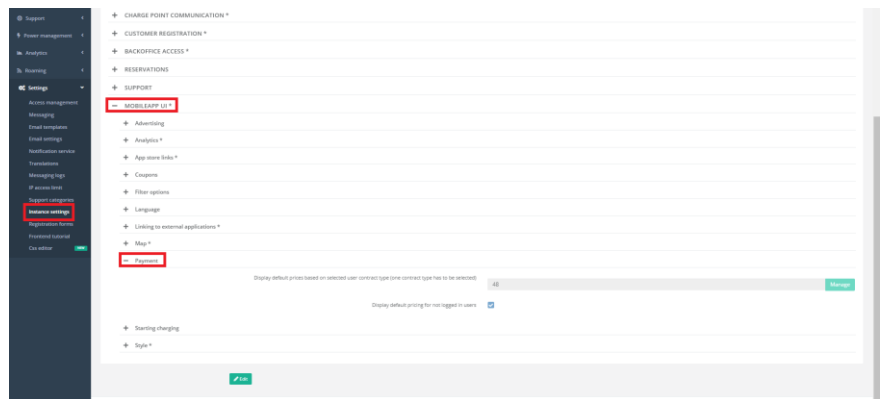
Define the general information about the tariff and prices. Most important part to configure the default prices is the settings of limits which is accessible in the last tab of tariff creation section.



Here you need to be careful that in the “Contract type” section you either leave it empty, which means that this tariff is valid for all contracts in your system, or if you want to use specific contract to show prices on the driver portal you define that this tariff is limited to this specific contract type by choosing it in that section.

You can define different prices for different locations, types of charging, hours, station owner... Basically functionality is completely the same as it is for regular tariff creation. More about this can be read in Billing and payment module documentation.

Last step for operator to show these prices is to enable them. This is done in the “Settings” in “Instance settings”. Go to Mobileapp UI and to Payment section.



First enable the setting called “Display default pricing for not logged in users” and second in the “Display default prices based on selected user contract type (one contract type has to be selected)” select the contract which will be used for default prices by simply clicking on the “Manage” button and choosing the contract.